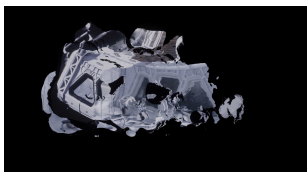


Wagehe Raufi

Hidden Architect

Feb 15 – Mar 13, 2021

*hidden architect - moths as mess*

2020

Single channel 4K video, color,
sound

11 minutes 18 seconds, 16:9

Edition of 3 + II AP

RAW007

*Untitled*

2019

Textiles, agar-agar, water-retaining
granules, ink, pigment

92 x 167 x 22 cm

RAW008

*Untitled*

2021

Textiles, agar-agar, water-retaining
granules, ink, pigment, thibra,

PLA (polylactic acid)

150 x 200 x 7 cm

RAW009

*blob*

2019

Textiles, thermoplastic material,
agar-agar, water-retaining granules,
ink, pigment

75 x 130 x 160 cm

RAW010

*snake detection frame*

2020

Plastics, agar-agar, water-retaining
granules, ink, pigment, aluminum,
acrylic

101 x 71 x 3 cm

RAW011



Untitled (black widow)
2021
Mesh, water-retaining granules,
agar-agar, pigment
365 x 23 x 23 cm
Edition of 2
RAW012



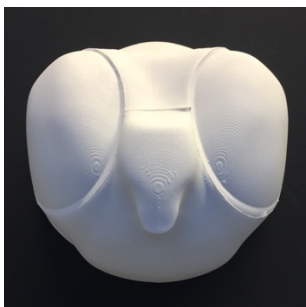
moths as mess (1/10)
2020
Porcelain, fully glazed
19 x 19 x 16 cm
Edition of 10 + III AP
RAW001



moths as mess (2/10)
2020
Porcelain, partially glazed
19 x 19 x 16 cm
Edition of 10 + III AP
RAW002



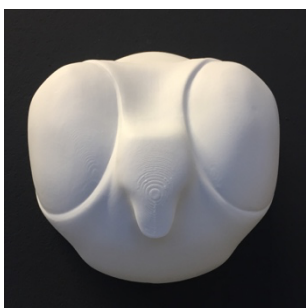
moths as mess (3/10)
2020
Porcelain, partially glazed
19 x 19 x 16 cm
Edition of 10 + III AP
RAW003



moths as mess (4/10)
2020
Porcelain, prototype
19 x 19 x 16 cm
Edition of 10 + III AP
RAW004



moths as mess (5/10)
2020
Porcelain, fully glazed
19 x 19 x 16 cm
Edition of 10 + III AP
RAW005



moths as mess (6/10)
2020
Porcelain, bisquit
19 x 19 x 16 cm
Edition of 10 + III AP
RAW006
